



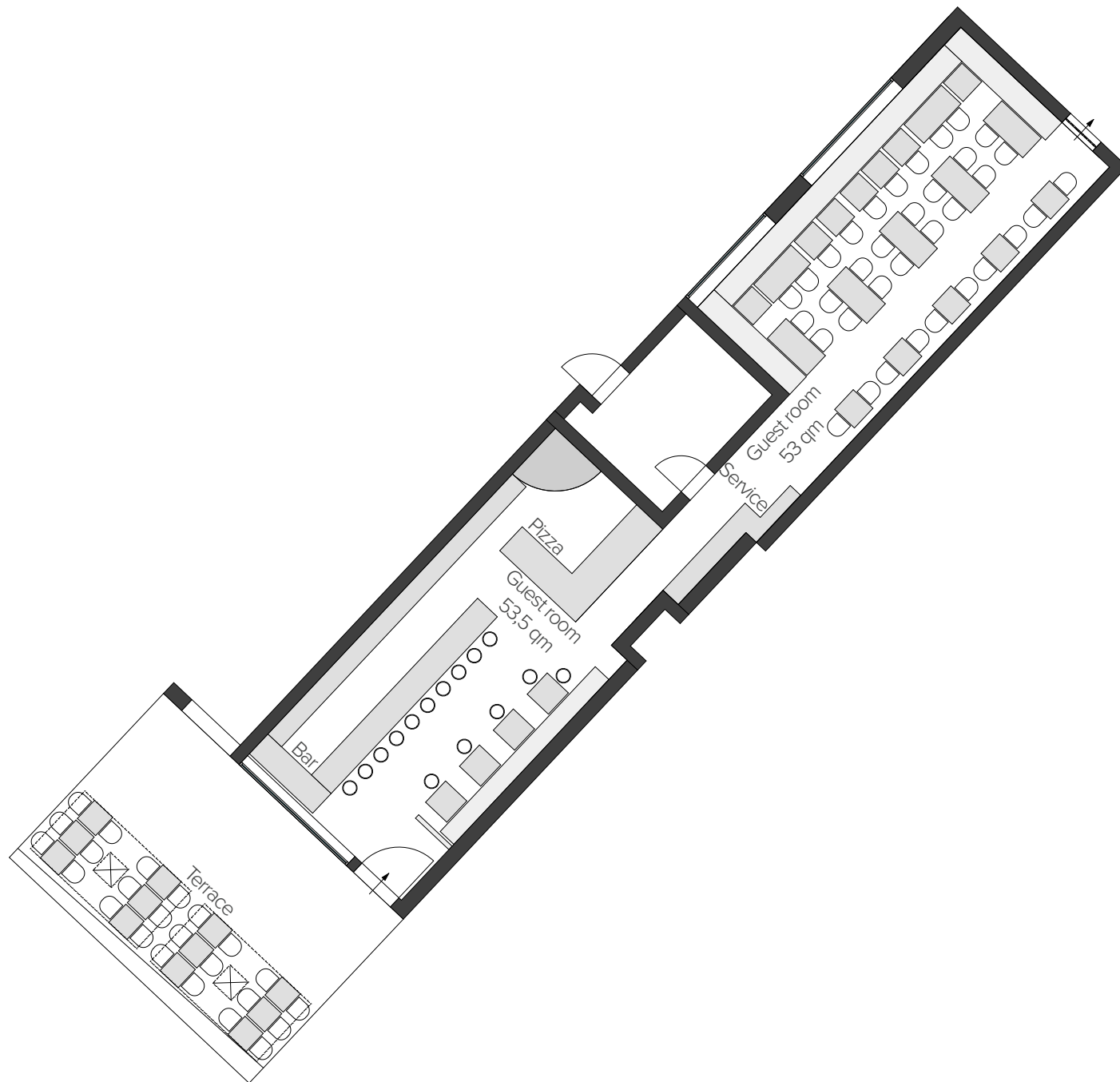
riva tal

Italian Joy of Life

The riva at tal is an attraction and meeting point for fans of high-quality pizza creations. A sophisticated mix of southern flair and typical Mediterranean casualty is on the daily menu.

The riva at tal, directly located at the Isartor, is right on the pulse of Munich's time: a skilful mixture of bar and modern pizzeria with lifestyle, livelihood and cosiness all at the same time. Through the glass front, guests can watch the hustle and bustle on the street, while the original beech wood stove with glass mosaic tiles in the bar area creates a comfortable atmosphere. During the day it is the perfect place to relax after a shopping tour or during your lunch break. Later, with an aperitif, it provides a relaxed and casual start to a successful evening. In the restaurant area, self-designed tables and chairs made of oak and teak give uniqueness and puristic extravagance. Models of the Italian motorboat manufacturer of the same name „Riva“ decorate the walls of the room. The classic Italian cuisine meets innovative creations: guests will find on the menu not only the traditional pizza but also the Pinsa (original form of pizza), pasta creations and various salads. At the riva at tal, Italian lifestyle and Munich lifestyle merge to create a perfect culinary experience.





riva tal

RIVA TAL FACTS:

Furnishings

bright ambience with self-designed tables, benches and chairs made of oak and teak, large mirrored surfaces and a bricked original wood stove with glass mosaic tiles

Capacity

60 persons sitting in the restaurant, 18 persons seated at bar tables and 20 standing at the bar, additional 40 persons seated on the terrace
Area: 84 m²

Events

Business lunches, casual dinners, after-work dinners, family celebrations, birthdays, Christmas parties, baptism and communion celebrations

Opening Hours

Monday - Saturday: 11:30–1:00 AM
Sunday: 11:30–1:00 AM (Pizza, Pasta until 23:00)

Event contact information

email: events@kull-kg.de
tel: +49(0) 89 540 474 22 54